

Silentblok Typ 6 (Typ DP)

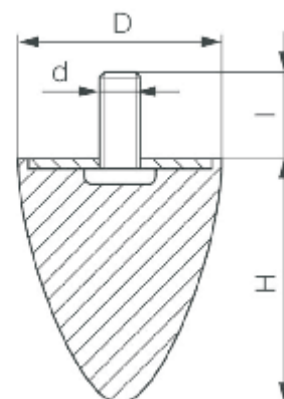


Technická data:

- ☛ tvrdost pryže 57 Shore A
- ☛ tolerance tvrdosti ± 5 Shore A
- ☛ pracovní teplota -30 °C až 80 °C
- ☛ zatížení hodnoty se vztahují ke statickému zatížení

Materiál:

- ☛ pryž přírodní kaučuk NR (NK)
- ☛ barva černá
- ☛ ocelové díly pozinkovaná ocel



| D | H | Typ | d _{xl} | Zatížení max. N | Označení | Obj. kód |
|-----|-----|-----|-----------------|-----------------|---------------------|----------|
| 10 | 10 | 6 | M5x12 | 59 | 10/10 Typ6 M5x12 | 746001 |
| 15 | 12 | 6 | M6x18 | 90 | 15/12 Typ6 M6x18 | 746018 |
| 18 | 18 | 6 | M6x10 | 140 | 18/18 Typ6 M6x10 | 40797 |
| 20 | 24 | 6 | M6x18 | 130 | 20/24 Typ6 M6x18 | 746003 |
| 25 | 16 | 6 | M6x18 | 230 | 25/16 Typ6 M6x18 | 746004 |
| | 20 | 6 | M6x18 | 190 | 25/20 Typ6 M6x18 | 746005 |
| | 25 | 6 | M6x12 | 150 | 25/25 Typ6 M6x12 | 40798 |
| 30 | 30 | 6 | M8x23 | 260 | 30/30 Typ6 M8x23 | 746006 |
| | 36 | 6 | M8x20 | 320 | 30/36 Typ6 M8x20 | 746007 |
| 35 | 35 | 6 | M8x16 | 350 | 35/35 Typ6 M8x16 | 40796 |
| | 40 | 6 | M8x23 | 300 | 35/40 Typ6 M8x23 | 746008 |
| 50 | 50 | 6 | M10x20 | 740 | 50/50 Typ6 M10x20 | 40799 |
| | 58 | 6 | M10x28 | 600 | 50/58 Typ6 M10x28 | 746024 |
| | 61 | 6 | M8x26 | 590 | 50/61 Typ6 M8x26 | 746010 |
| | 67 | 6 | M8x38 | 890 | 50/67 Typ6 M8x38 | 746017 |
| 70 | 70 | 6 | M12x24 | 1250 | 70/70 Typ6 M12x24 | 40768 |
| 75 | 89 | 6 | M12x37 | 1680 | 75/89 Typ6 M12x37 | 746014 |
| 95 | 83 | 6 | M16x47 | | 95/83 Typ6 M16x47 | 746015 |
| 108 | 94 | 6 | M12x24 | | 108/94 Typ6 M12x24 | 4331004 |
| | 108 | 6 | M12x24 | | 108/108 Typ6 M12x24 | 4331005 |
| | 121 | 6 | M12x24 | | 108/121 Typ6 M12x24 | 4331006 |
| 118 | 77 | 6 | M16x41 | | 118/77 Typ6 M16x41 | 746016 |
| 115 | 136 | 6 | M16x43 | | 115/136 Typ6 M16x43 | 40715 |